

Make it work.



## Heavy Particle Separator & Feeder JPT HPS-200

For continuous feeding of material



### ■ Feeder HPS-200

The feeder HPS-200 is primarily applied for continuous feeding of material into the MultiCracker. The feeder can also be used for pre-cleaning applications and removal of heavy particles and ferrous items ahead of hammer and roller mills. For hammer mills, the feed rate is automatically adjusted to the load of the mill by the electrically operated segment slide gate and the frequency controlled feeder roll. For roller mills, the feed rate can be manually adjusted via the segment slide gate.

The integrated heavy particle separator and a permanent magnet remove any impurities such as stones or ferrous items. Machine protection and product quality is given at any time

### Technical data

- Particle size: max. length 60 mm
- Bulk density: 0.2 – 0.8 kg / dm<sup>3</sup>
- Moisture content: max. 15 % H<sub>2</sub>O
- Adjustable feeding rate
- Load-controlled throughput regulation
- Heavy particle separator
- Permanent magnet separator

JPT-ProTech AB is a reliable partner with expertise in machine and equipment manufacturing. We have solid knowledge about industrial machine and electronic technology and automation. We can manage even larger project supplies from design to implementation and maintenance. Our maintenance is based on a systematic and proactive approach that guarantees the operation of our equipment.

JPT-ProTech AB provides solutions to the manufacture of chicken, pig and cattle feed. JPT's product selection includes complete feed manufacturing plants in different sizes from farms to industrial production.

The focus in the design of our factory applications and equipment is **energy efficiency, hygiene, reliability and usability.**

All our equipment are designed and tailored according to the client's needs. They are delivered completed installed and include user training.

Equipment manufacture is focused on our machinery plant in Europe. The equipment are easily adaptable, and they have undergone tests in demanding conditions ready for our clients.

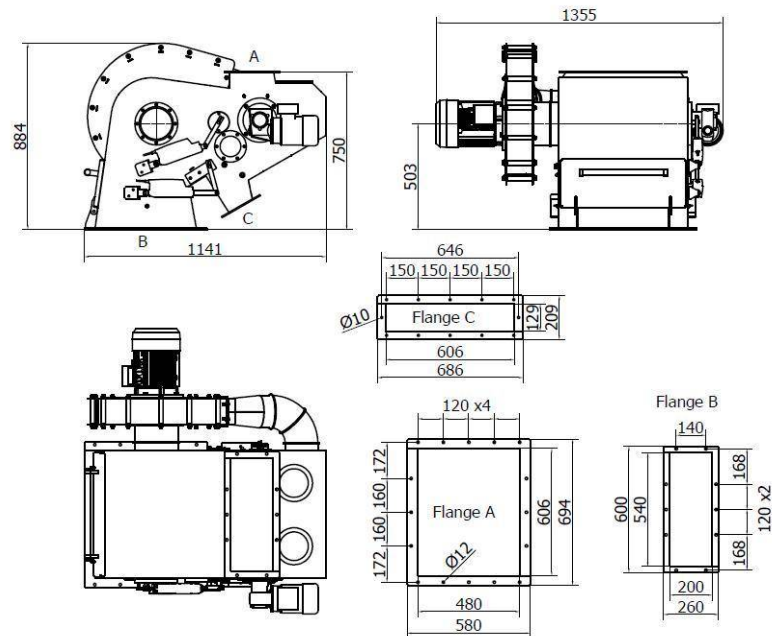
Our personnel have decades of experience in industrial processes, techniques and equipment installations. Our office is located in Malmo. Our operating area covers the entire world.

## JPT's specialist areas

- animal feed industry
- cereal processing
- biomass pellet industry
- engineering



## Dimensions HPS-200



Contact

JPT-ProTech AB ■ +46 737 47 16 18 ■ Fjellebyväg 3 ■ SE-237 91 Bjarred, SWEDEN

[www.jptprotech.se](http://www.jptprotech.se)